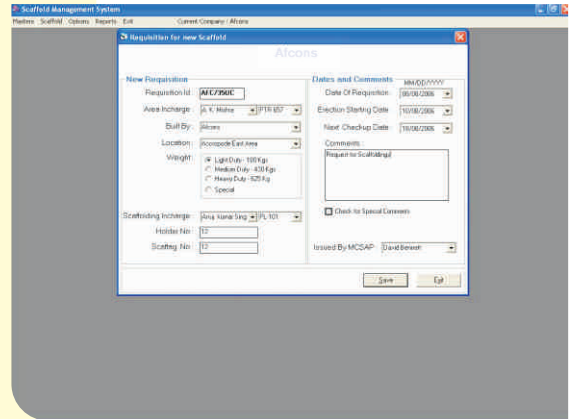


Introduction

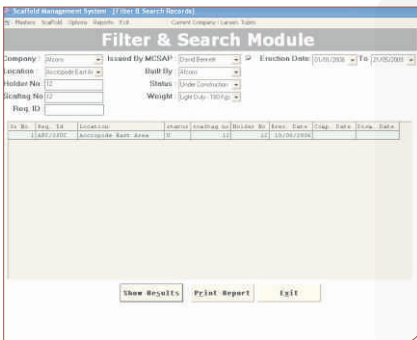
Scaffolding Management Software is a network based application captures data and generates real-time reports about your single / multiple work-site's scaffolding. Its scheduler keeps track of the erection starting date, daily inspections, scheduled inspection, completion date and dismantle date.

Major Modules of Scaffold Management System are:

- ▶ Requisition of new scaffold erection & approval
- ▶ Scaffold completion data record keeping
- ▶ Record keeping of scaffold dismantling / removal of scaffold tower
- ▶ Scheduler
- ▶ Inspection log record keeping
- ▶ Reports & graphs
- ▶ Alerts / Reminders
- ▶ Master record generation for frequent data



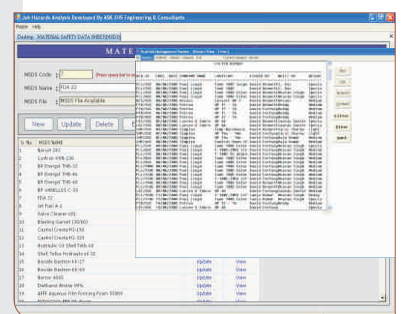
Advantages



- ▶ Obtain customized work-site reports that are accurate, up-to-the-minute, and available instantly
- ▶ Simplified and integrated system avoids complexity in work
- ▶ Fast and accurate decision making conserves time
- ▶ Reduces communication gap between line management and job executors

Key Features

- ▶ Complete track of scaffolds with their scaftag number
- ▶ Search engine
- ▶ Scheduler for inspection
- ▶ Scaffold safety Inspection & maintenance log
- ▶ Alerts / reminder for safety inspection and planned completion & dismantling dates
- ▶ Useful reports & graphs
- ▶ Closed out report
- ▶ List of scaffold based on criteria filter (new requisition, under construction, under use, restricted for use, dismantled)
- ▶ Inspection reminder list
- ▶ Scaffold list based on in-charge
- ▶ Inspection and maintenance log printing
- ▶ Location Vs. Number of Scaffold in place
- ▶ Period Vs. Number of planned completion and dismantling of scaffold
- ▶ Integration with RFID / Barcode technology to validate inspection log record (Optional)



Modules

→ Complete track of scaffolds with their scafftag number

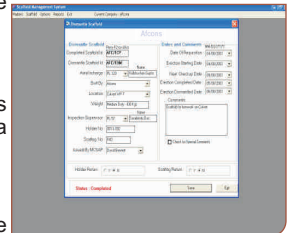
ID	Name	Location	Status	Start Date	End Date
1001	Workshop	Workshop	Under Construction	2010-01-01	2010-03-31
1002	Plant	Plant	Under Use	2010-02-01	2010-05-31
1003	Storage	Storage	Restricted for Use	2010-03-01	2010-06-30
1004	Office	Office	Dismantled	2010-04-01	2010-07-31

At the start of scaffold erection, system will assign a unique identification number, which will become scafftag number and attached to each scaffold. With the help of unique scafftag number, user can maintain all records relevant to scaffold such as planned completion and dismantling date, inspection schedules, inspection log and maintenance log.

Based on unique scafftag number, user can retrieve all current and history data of scaffold with just a single click. Finding of new hazards, control measures or consequences during development of new JHA, later on it can be added to library data by authorized user only for future reference.

→ Search Engine

Search engine refers to the facility which provides quick access to stored data. User can search scaffold and its relevant data by entering filter criteria such as requisition date, erection start date, completion date, dismantle date, in-charge name, contractor name, location on work-site, etc...



→ Scheduler for inspection

User can have facility to plan safety inspection of scaffold based on their planned completion date or dismantling dates and weekly / fortnightly inspections. Based on this scheduler, software generates alerts / reminder to concern person via on screen alerts, email, SMS or fax.

→ Scaffold safety Inspection & maintenance log

Scaffold safety inspection and maintenance log are also recorded into software, which will create base to analyze the history records. Pocket PC with wireless support will help inspector to record this log from work-site reducing the duplicate efforts with efficient data management and timely reporting.

→ Alerts / reminder for safety inspection and planned completion & dismantling dates

Software will keep track on scheduled inspections, maintenance, planned completion dates & dismantling dates. Software generates alerts / reminder to concern person via on screen alerts, email, SMS or fax.

→ Useful reports & graphs

The effectiveness of any data management system is always depends upon meaning full reports and graphs generated. Some of the reports and graphs can be generated from Scaffold Management Software;

→ Closed out report

→ List of scaffold based on criteria filter (new requisition, under construction, under use, restricted for use, dismantled)

→ Inspection reminder list

→ Scaffold list based on in-charge

→ Inspection and maintenance log printing

→ Location Vs. Number of Scaffold in place

→ Period Vs. Number of planned completion and dismantling of scaffold

→ Integration with RFID / Barcode technology to validate inspection log record (Optional)

Each scaffold / Critical section of single scaffold can be equipped with RFID tag/ Barcode label, while inspection/routine checkup inspector has to scan RFID tag/Barcode label using handheld scanner for confirmation. This operation helps management to validate inspection records and their timings against fake inspection records.

ID	Name	Location	Status	Start Date	End Date
1001	Workshop	Workshop	Under Construction	2010-01-01	2010-03-31
1002	Plant	Plant	Under Use	2010-02-01	2010-05-31
1003	Storage	Storage	Restricted for Use	2010-03-01	2010-06-30
1004	Office	Office	Dismantled	2010-04-01	2010-07-31